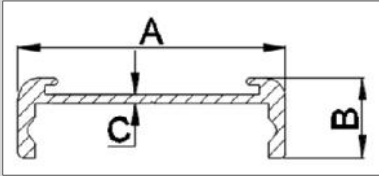
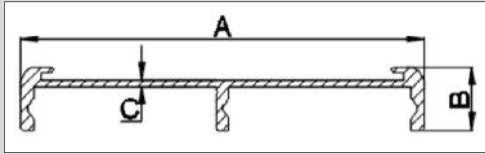


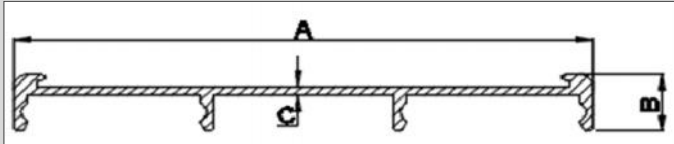
## Aluminium Signage Flat Profiles



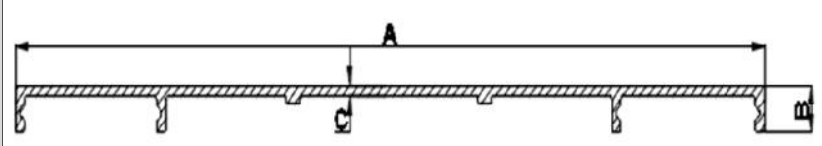
Description	A	B	C	WT/MTR
31mm Flat	31	9.2	1	0.172



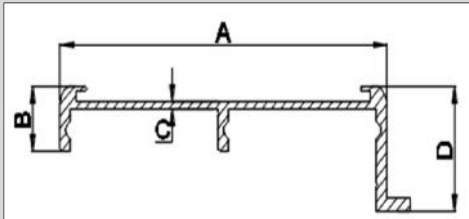
Description	A	B	C	WT/MTR
45mm Flat	45	9.2	1.5	0.296
62mm Flat	62	9.2	1.1	0.317



Description	A	B	C	WT/MTR
93mm Flat	93	9.2	1.5	0.51
124mm Flat	124	9.2	1.5	0.632



Description	A	B	C	WT/MTR
155mm Flat	156	9.2	1.5	0.779

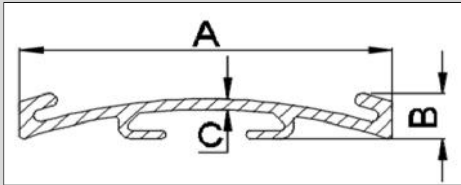


Description	A	B	C	D	WT/MTR
62mm Flat With Hanger	62	9.6	1.	18.5	0.366

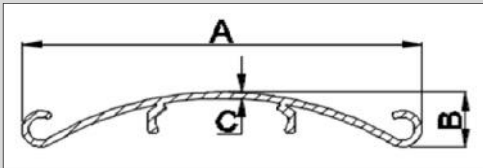


# Dies Catalog

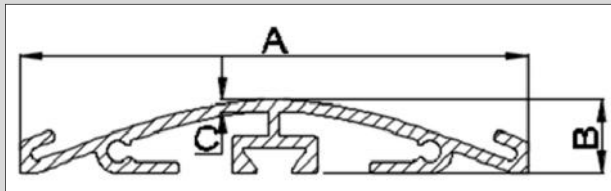
## Aluminium Signage Curved Profiles



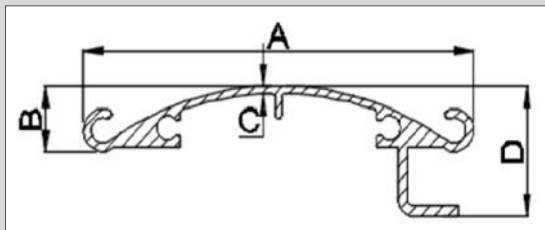
Description	A	B	C	WT/MTR
40mm Curved	40	5.37	1.3	0.22



Description	A	B	C	WT/MTR
52mm Curved	51.49	7.6	0.9	0.3



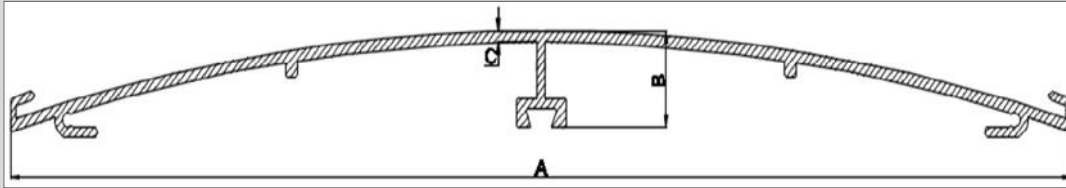
Description	A	B	C	WT/MTR
60mm Curved	60	8.5	1.4	0.439
80mm Curved	80	10.4	1.3	0.534
100mm Curved	100	10.5	1.3	0.590
120mm Curved	120	10.9	1.3	0.814
150mm Curved	150	13.31	1.3	1.040



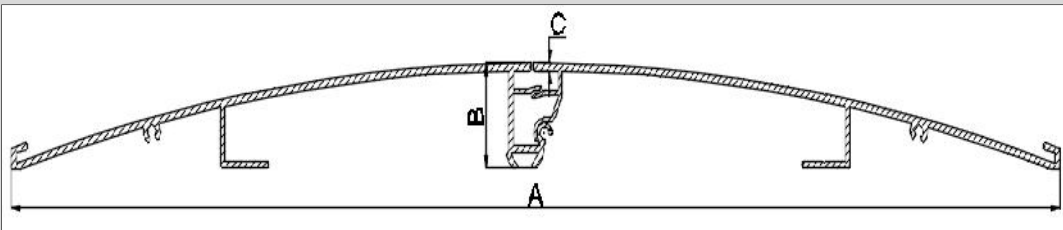
Description	A	B	C	D	WT/MTR
52mm Curved With Hanger	52	7.7	0.9	15.2	0.285



## Aluminium Signage Curved Pro-

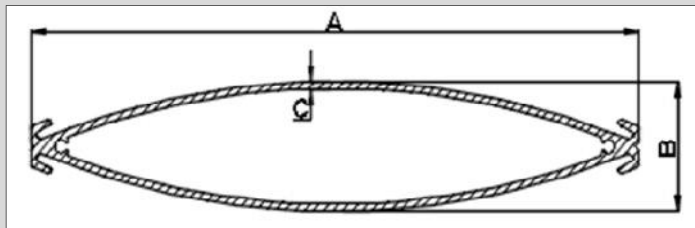


Description	A	B	C	WT/MTR
225mm Curved	225	20	2.3	1.557



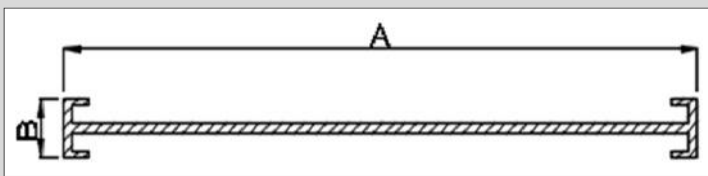
Description	A	B	C	WT/MTR
300mm Curved	300	20.7	1.5	1.776

## Aluminium Signage Both Side Curved Profiles

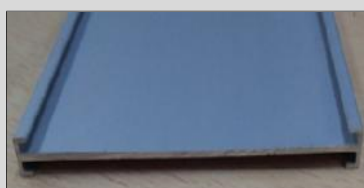


Description	A	B	C	WT/MTR
111.4mm Both Side Curved	111.4	21.5	1.2	0.950
150mm Both Side Curved	150	26.9	1.8	1.6

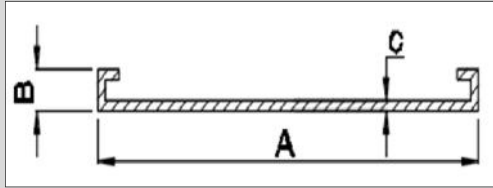
## Aluminium Signage Both Side Flat Perpendicular Profiles



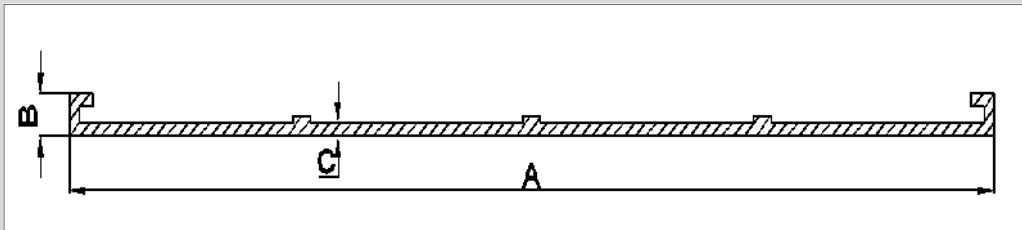
Description	A	B	C	WT/MTR
100mm Both Side Flat	100	8	1.5	0.494
150mm Both Side Flat	150	9	1.5	0.67



Aluminium Signage Flat Plain Profiles



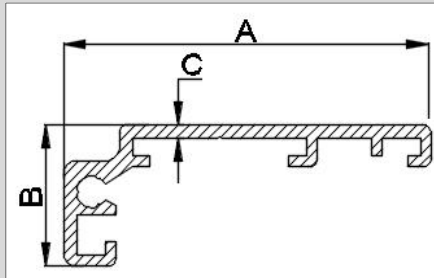
Description	A	B	C	WT/MTR
40mm Flat Plain	40	4.4	1.2	0.16
60mm Flat Plain	60	4.7	1.2	0.23



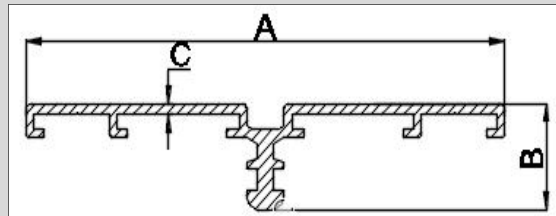
Description	A	B	C	WT/MTR
150mm Flat Plain	150	5.2	1.6	0.717



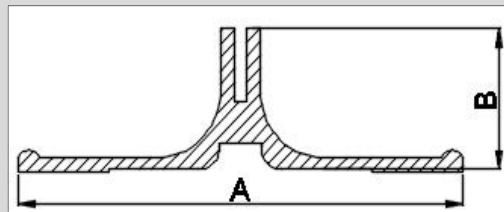
## Aluminium Signage Other Profiles



Description	A	B	C	WT/MTR
Side Track	41.7	15.7	1.5	0.339



Description	A	B	C	WT/MTR
Center/Divider Track	78.4	15.2	1.5	0.572



Description	A	B	WT/MTR
Wall Mounting Bracket for 100mm both Side Flat	64	19.1	0.580

